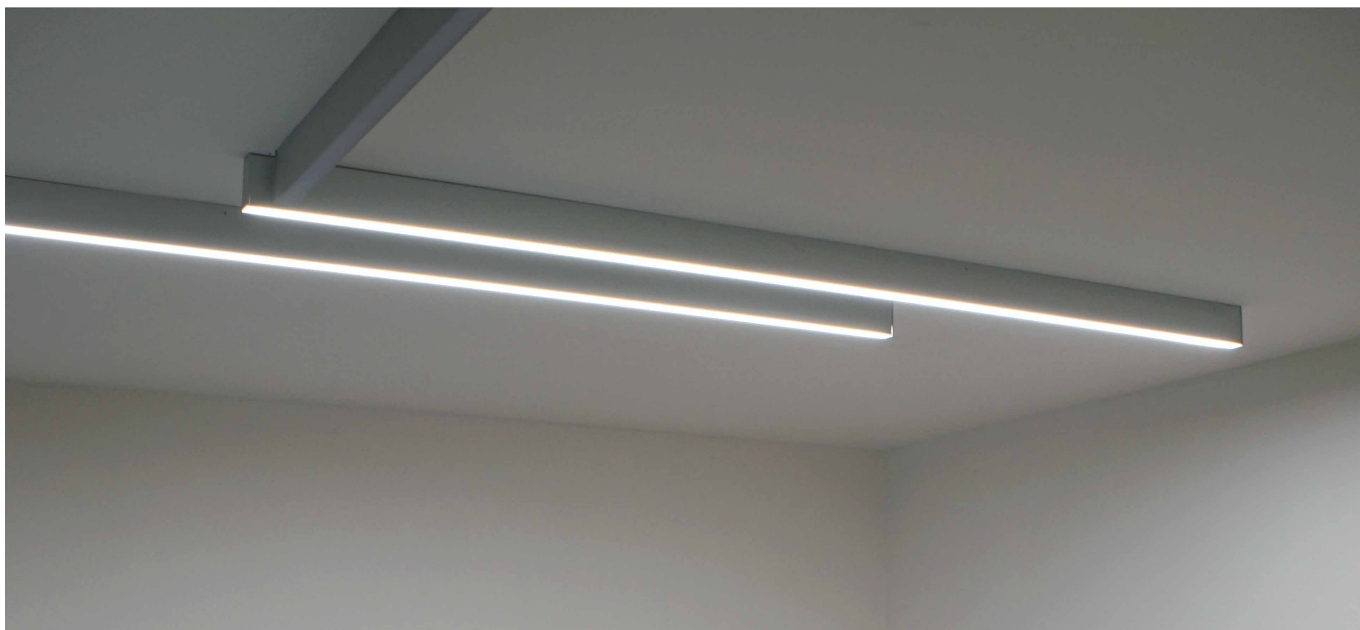


KAPPA 3

K3.

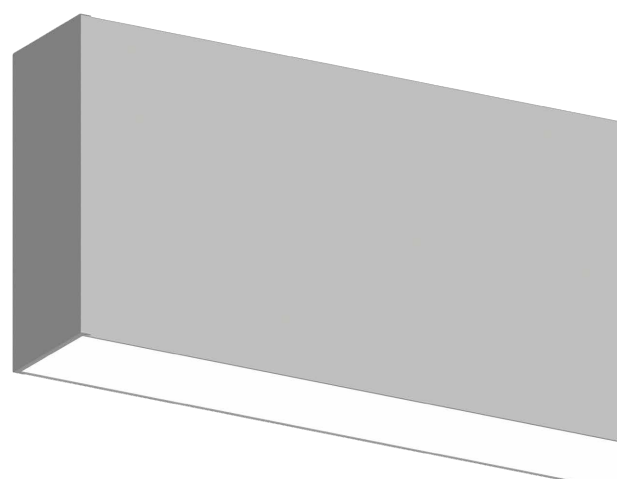


Decorated anodised aluminium lamp complete with brushed or microprismatic diffuser and high-brightness LED source with a high Lumen/Watt ratio. Suitable for primary residential, retail, large-space and general lighting. Ceiling mounting with concealed magnets, plus steel safety cables.

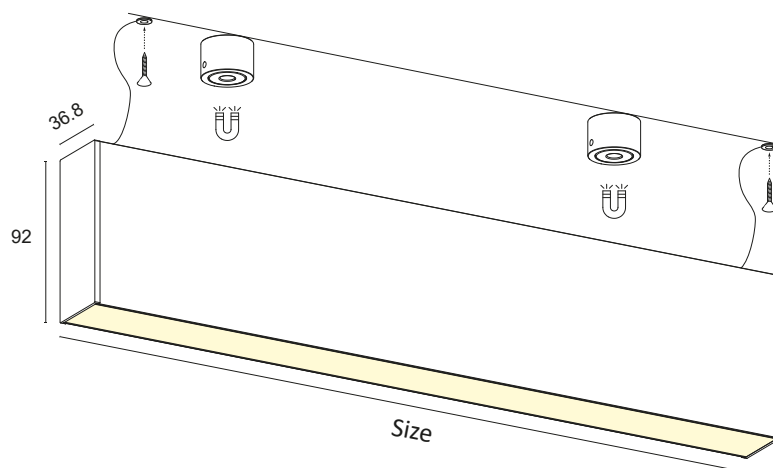
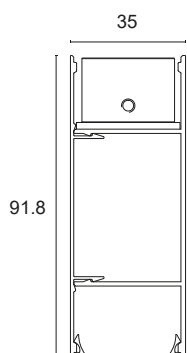
Constant 24Vdc voltage supply
Parallel connection, 50 cm cable

Constant voltage power supplies page 237

Dimming Accessories page 249



 **MADE IN ITALY**



BASIC CODES

K3.

FINISHES

- **1** White
 - **2** Matt black
 - ▒ **7** Brushed aluminium
- *Other finishes on request.

SIDE SUPPORTS

- **1** White
- **2** Matt black
- ▒ **7** Brushed aluminium

SIZE

- D** 600mm
- E** 700mm
- F** 800mm
- G** 900mm
- H** 1000mm
- I** 1200mm
- J** 1300mm
- K** 1400mm
- L** 1500mm
- M** 1800mm
- N** 2000mm
- O** 2300mm
- P** 2500mm
- Q** 2800mm
- R** 3000mm

LED COLOUR

- **BN** 4000K
 - **BC** 3000K
 - **CC** 2700K
- *Strip also available coloured, Dynamic White, RGB and RGBW.

POWER

- | | | | | | | |
|-----------|---------|----------|----------|-------|--------|---|
| F | 20.2W/m | 2500Lm/m | 168LED/m | S2835 | CRI>85 |  |
| F+ | 20.2W/m | 2500Lm/m | 168LED/m | S2835 | CRI>90 |  |
| G | 25W/m | 3500Lm/m | 160LED/m | S2835 | CRI>80 |  |
| L+ | 28W/m | 3500Lm/m | 160LED/m | S2835 | CRI>90 |  |
| H | 30W/m | 4500Lm/m | 240LED/m | S2835 | CRI>80 |  |
| M+ | 40W/m | 5000Lm/m | 480LED/m | S2835 | CRI>90 |  |

*Energy class referring to light source

DIFFUSER

- M** MICROPRISMATIC
- S** BRUSHED

POWER SUPPLY

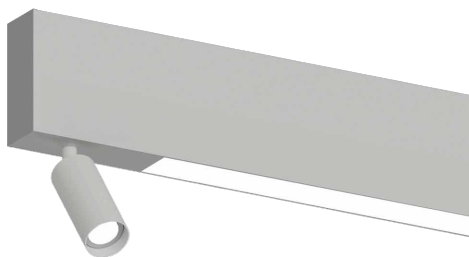
- N** ON/OFF
 - D** DALI + PUSH
- *The lamp can be customised with independent switch-on and dimming on request.

Code example:

KAPPA 3 + White + Side supports white + 1000mm + 3000K + 25W/m CRI>80 + Brushed diffuser + ON/OFF = Code: K3.11HBCGSN

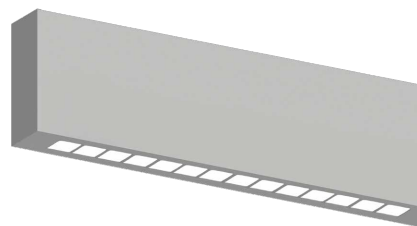
COMPLEMENTARY SYSTEMS

EXAMPLE OF KAPPA CEILING LIGHT AND REM PROJECTOR



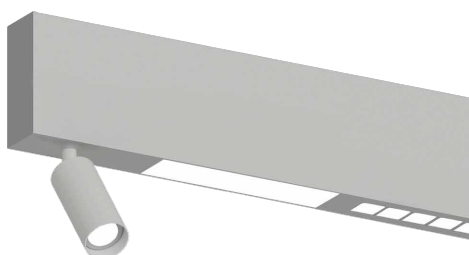
*Details on p. 276

EXAMPLE OF KAPPA CEILING LIGHT AND DARK MODULE



*Details on p. 276

EXAMPLE OF KAPPA CEILING LIGHT, REM AND DARK MODULE



*Details on p. 276